

Studi sulla neoplasia pancreaticata

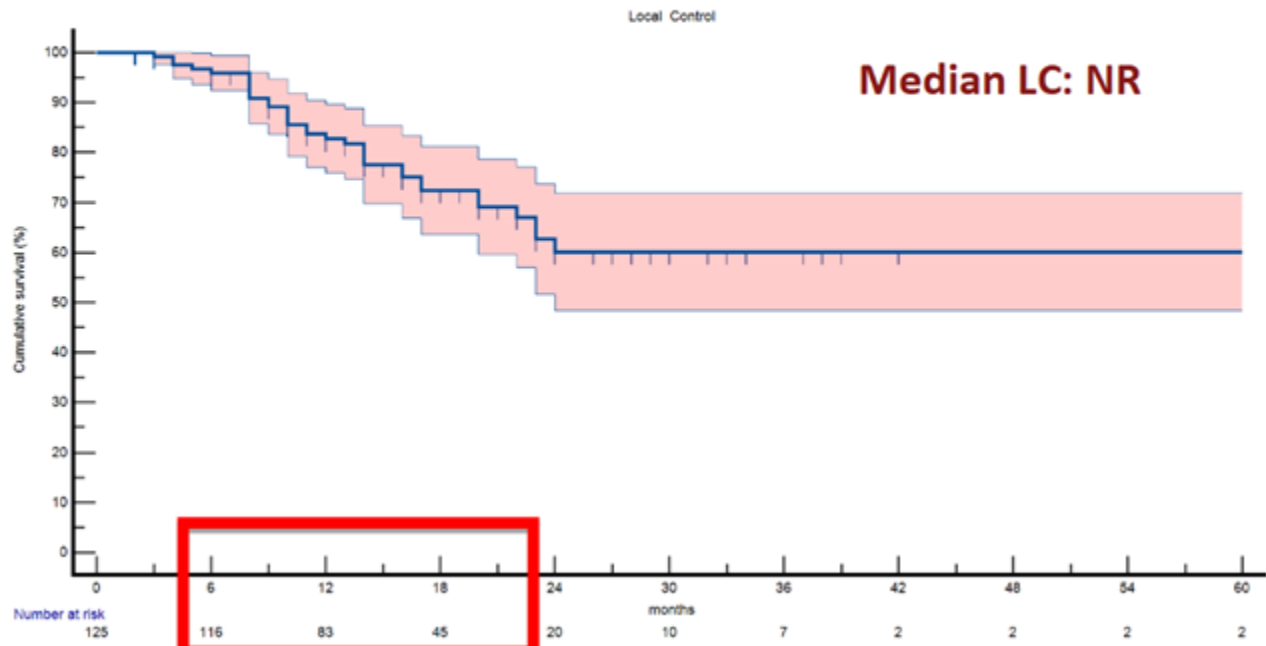
Gruppo AIRO GI

Dott.ssa A. Arcelli

PAULA DB

- ✓ 500 LAPC (125 SBRT)
- ✓ multicenter (15 centers)
- ✓ retrospective (2012-2022)
- ✓ observational (large DB)
- ✓ median FU: 17 months [3-90]
- ✓ neoadjuvant CHT: gemcitabine (14.9%), gemcitabine + Nab-paclitaxel (35.9%), FOLFIRINOX (41.2%), FOLFOX (8.0%)
- ✓ Median total dose= 30.0 [18.0-67.5] Gy
- ✓ Median tumor diameter= 3.7 [1.2-8.7] cm

Results:



PAULA DB

- ✓ Long term analysis
- ✓ Follow-up of patients enrolled
- ✓ New patients

alessandra.arcelli@aosp.bo.it